



## ACIES – V9528

### Managed 24 x 10/100/1000 with 4 x SFP L2 Switch



The **ACIES-V9528** is a high performance managed SNMP Layer 2 switch that provides users with 24 x 10/100/1000Mbps Ethernet with 4 Gigabit SFP slots. The Web/SNMP management provides remote control

capability that gives flexible network management and monitoring options. Whether managed through "in-band" SNMP management station, internet web browser, or through "out-of-band" RS-232 console port, the **ACIES-V9528** facilitates network operational control and diagnosis.

For increased bandwidth application, **ACIES-V9528** can accommodate up to 32 trunk groups with LACP link aggregation. Moreover, these trunk ports are with fair-over function to provide redundant back up if one or more of ports are malfunctioning. It also supports both 802.1Q VLAN and GVRP VLAN Registration thereby simplifying network traffic segmentation, broadcast domain extension and other associated benefits of constructing VLANs. The abundance of features translates into increased efficiency and performance in network administration.

### Main Features

#### Standards:

- IEEE: 802.3, 802.3u, 802.3z, 802.3ab, 802.3x, 802.3ad, 802.1d, 802.1w, 802.1s, 802.1q, 802.1p

#### Interface:

- Twenty 10/100/1000Base-T RJ-45 ports
- Four Gigabit SFP/RJ-45 Combo
- RS-232 Console (RJ-45)

#### Networking:

- Spanning Tree Protocol/ Rapid Spanning Tree Protocol/ Multiple Spanning Tree
- Automatic learning of up to 8K MAC addresses
- DHCP Option 82
- IGMP Snooping v1/v2/v3
- Ingress/Egress Rate limitation
- L2/L3/L4 Access Control List
- 8 Priority Queues
- Full VLAN (802.1q) with double tagging (Q in Q)
- LACP Link Aggregation
- GVRP VLAN Registration Protocol

#### Management:

- Web-based GUI

- SNMP
- RMON
- Telnet/Console
- Command Line
- Port configuration, status, statistics, security
- Loss of link management on fiber ports
- Port mirroring
- Firmware upgrade via TFTP
- Configuration file download/upload
- Dual firmware images
- Multiple configuration files
- **Power:**
  - 100~240 VAC, 50/60 Hz, 2A
  - Redundant 12 VDC input
  - Power consumption: 54W

#### Mechanical & Environmental:

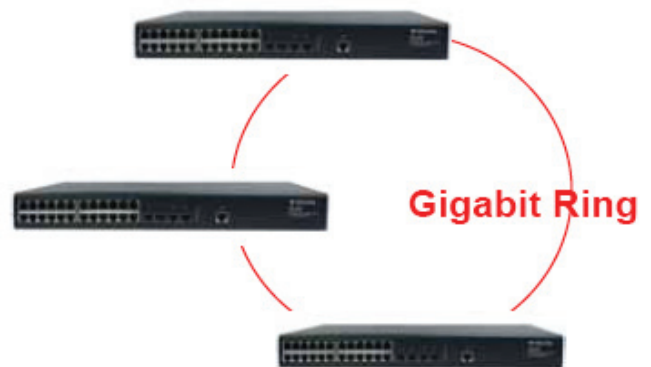
- Operating temperature: 0°C~50°C
- Storage temperature: -40°C~70°C
- Humidity: 5%~95% non-condensing

## Specifications

<b>Standards</b>	IEEE 802.3	10Base-T	<b>VLANs</b>	Port-based		
	IEEE 802.3u	100Base-TX		Tag-based (256 active VLANs)		
	IEEE 802.3ab	1000Base-T		Q-in-Q		
	IEEE 802.3z	1000Base-SX/LX/LHX		<b>QoS</b>	Port-based, IEEE 802.1p tag, IPv4	
	IEEE 802.3ad	Port Trunking			ToS/DiffServ, IP Precedence, ACL,	
	IEEE 802.1d	Spanning Tree Protocol			WRR & Strict Scheduling	
	IEEE 802.1w	Rapid Spanning Tree Protocol		<b>Wavelength</b>	Depend on SFP module	
	IEEE 802.1s	Multiple Spanning Tree Protocol			<b>Max Distances</b>	Fiber Optic: Up to 110km
	IEEE 802.3x	Flow Control		RS-232: 15m		<b>Temperature</b>
	IEEE 802.1p	Priority Queues		<b>Humidity</b>	Storage: -40°C to 70°C	
IEEE 802.1q	VLAN Tagging	<b>Emissions</b>	FCC Part 15 of Class A, CE, and VCCI Approved			
<b>Ports</b>	20 x 10/100/1000Base-T		4 x GbE Combo (SFP / RJ-45 Triple-speed)	<b>Safety</b>	CSA/NRTL	
	1 x RS-232 Console (RJ-45)	TUV/GS				
<b>Throughputs</b>	14,880/148,800/1,488,000 packets per second (pps) to 10/100/1000 Mbps ports		<b>Dimensions</b>	285 x 440 x 44mm (D x W x H)		
	Up to 8K addresses					

## Applications

Designed for enterprise applications. The diagram on the right illustrates a typical enterprise application for the ACIES-V9528 series. The actual distances of fiber trunks will depend on several factors, including the quality of cables used and the terminal equipment employed.



## Ordering Information

<b>ACIES-V9528</b>	Managed 24-port 10/100/1000 + 4-port SFP (SX/LX) L2 Switch with Redundant DC 12V Power Supply
--------------------	---

